



Belvedere Bulletin Feb-March 2025

Belvedere Community League 13223-62 Street Edmonton, Alberta T5A 0V5 (780)476-1224 info@belvederecl.com

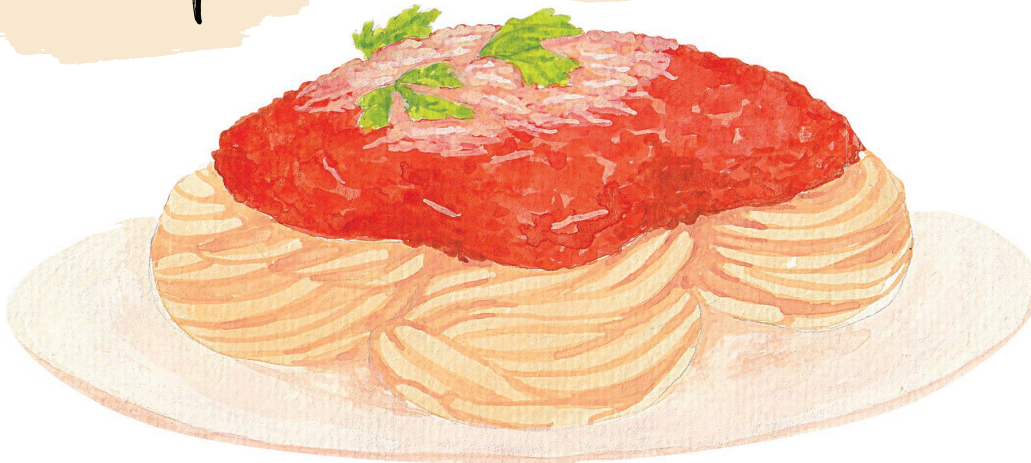


Family Day Community Event



11:30 – 1 pm

Free Lunch



Monday, February 17th

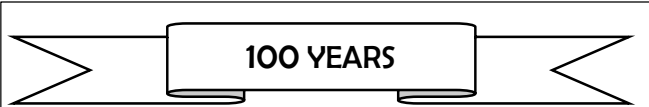
Edmonton

**BRING YOUR
SKATES
RINK OPEN
12-8:30 PM**



2024-2025 Belvedere Board

President	Vacant	president@belvederecl.com
V.President	Vacant	vicepresident@belvederecl.com
Secretary	Connie	secretary@belvederecl.com
Treasurer	Alana	treasurer@belvederecl.com
Membership	Mabel	membership@belvederecl.com
Newsletter	Mabel	newsletter@belvederecl.com
Website	BD	webmaster@belvederecl.com
Social	Carmen	social@belvederecl.com
Casino	Connie	
Bingo	Lisa	bingo@belvederecl.com
Area 2 Rep	Alana	
Drop-in	Sandra	dropin@belvederecl.com
Hall Rental	Vacant	info@belvederecl.com
Programs	Mafe	programs@belvederecl.com
Sports	Kevin	sports@belvederecl.com
Building/Grounds	Susanne/Bob	facility@belvederecl.com
Patrol	Stella	communitypatrol@belvederecl.com
Hall phone		780-476-1226



Memories.....Residents of North Edmonton, newly annexed to the City of Edmonton, met in November 1925 to discuss ways of improving schools and the community for the benefit of the children and adults. By December 10th the community league was formed. By December 20, 1925 league members held a work bee to construct the rink in time for skating in the holidays. The land used for this project at 66 str and 127 ave was previously owned by Swifts plant and was also used for summer baseball diamonds by the neighbourhood. An old fire hall purchased for \$75 was the first hall. In 1945 the league started a new hall fund with \$900 and 2 years later this had grown to \$3200. Work on the new hall began in 1946 but was not finished until 1948. The basement and kitchen were finished by volunteers by 1952. A new rink shack was built in 1957 by volunteers.

In 1967 the league moved to a new location at 60 str & 132 A Ave, with a new hall, rink shack and rink. The league made do with the small hall for several years and began fundraising for a new hall. September 1981 the new 6,000 sq ft hall with mezzanine, rink shack and dressing rooms attached was opened at 62 Str & 133 Ave.

This hall location is home to more memories being made at Belvedere community events, programs and our two skating rinks.

BELVEDERE DROP IN..... *It can be anything you want it to be!*

TUESDAYS 9:00am to Noon at the hall

Drop In is Free, the coffee is on and we have a variety of activities you can participate in or just socialize with neighbours & new friends.

Join us **MARCH 11, 2024 at 11:00am** for a free presentation on **Wills, Estates & Power of Attorney** by lawyer Lina Marrazzo

BELVEDERE SKATING and HOCKEY RINKS HOURS

Monday	Closed	These hours are weather dependant as the rinks will be closed at -22 including windchill or when warm weather creates soft ice from melting.
Tuesday	4:00 – 8:30	
Wednesday	4:00 – 8:30	
Thursday	4:00 – 8:30	
Friday	4:00 – 8:30	
Saturday	12:00 – 6:00	
Sunday	12:00 – 5:00	

Monday, FEB 17TH 12:00 – 8:30

Skating is FREE for all community league members, wear your current tag on your skates. Non-members are \$2.00 per person, each time you skate.

Memberships are available at the rink & all community events Family \$20 * Single Adult \$10 * Seniors \$10

Belvedere Community Safety and Patrol



Who are these eyes and ears? They are your neighbours! My name is Stella and I'm your Belvedere Community League Community Safety and Neighbourhood Watch representative. I'm asking one thing from everyone who reads this: get to know the people who live near you. Don't be a nosey neighbour, but do become a "**knowsy**" neighbour. Learn their names, if you feel comfortable exchange phone numbers and if they have kids or pets.

How does one do this? Go next door (both sides of your home) and across the street from your home and introduce yourself to your neighbours. If you're walking your dog, planting your garden, bike riding or just out and about, introduce yourself to people you encounter. Deliver a card to someone who just moved in. You don't need to share personal information but letting them know your name, where you live, and who you live with (and learning the same about them) goes a long way in knowing what to expect in your neighbourhood and sensing when something doesn't feel quite right even if you are a renter.

I'm certainly not advocating for spying on your neighbours or inserting yourself where you don't belong, but there is something to be said for neighbours who know each other.

The Belvedere neighbourhood is by no means an extremely rampant crime hot spots, but we are not immune to thefts, break-ins, graffiti, other property crimes, encampments etc. Some of it happens at nighttime but some mischief-makers are brazen enough to operate in broad daylight. Whether it's planned crime (following delivery or work trucks to locations) or crimes of opportunity (rifling through an unlocked car, garage or shed), much of it can be prevented. Locking doors consistently and asking that packages be delivered to depots or asking your neighbour to keep an eye out for the delivery and collect it for you, are great ideas (in fact, the Edmonton Police Service recommends a 9pm routine to ensure everything is locked up), but having eyes and ears in the neighbourhood are also great crime deterrents.

We all want to live in safe communities and awareness and participation are great cornerstones for neighbourhood crime prevention. If you witness a crime, please report it MAKE THE CALL or if you are noticing anything else, please also MAKE THE CALL. If you have any ideas or questions regarding the Neighbourhood Watch program, or if you would like to join the team, I'd love to hear from you.

Contact Stella – communitypatrol@belvederecl.com

VOLUNTEERS NEEDED FOR BINGO'S

Sunday March 9, 2025 -Evening (4:45-9:30pm)
Saturday March 29 - Afternoon (11am-4pm)

Belvedere School Parent Society Needs Your Help
Volunteers Needed - Century Casino Feb.22 & 23
Please contact belvedereschoolcasino@gmail.com

Kensington Bingo Hall - Free Supper
Contact Lisa at bingo@belvederecl.com

Want all the latest info about Belvedere FOLLOW us on Facebook or check out our website.

Memberships are available at the rink, Community drop in and all events



BELVEDERE COMMUNITY LEAGUE PRESENTS

Edmonton

**\$1 CONCESSION:
POPCORN,
DRINKS &
HOT DOGS**

VIEWING:

WRECK-IT RALPH (NOON)

UP (2 PM)

ELEMENTAL (4 PM)



SPRING BREAK MOVIE MANIA

**MAR
27**

**MOVIES PLAY
AT 12 NOON
2 & 4 PM
AT COMMUNITY HALL
13223-62 street**

**FREE
ADMISSION
ALL
CONCESSION
ITEMS \$1**